



**Project** 135558  
**Lab #** 131066  
**Date Rec'd** 12/9/2025  
**Report Issued** 12/23/2025

**Project**  
**Sample** Kisspeptin 10 mg

### Certificate of Analysis

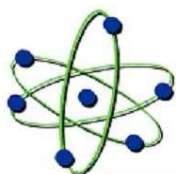


<u>Analyte</u>	<u>Result</u>	<u>LOQ</u>	<u>Units</u>	<u>% of Label</u>	<u>Method</u>	<u>Date</u>	<u>CAS</u>
	10.7	0.5		107.4		12/15/2025	
<b>Peptide Analysis</b>							
Chromatographic purity	99.78	0.5	%		HPLC-UV/MS	12/15/2025	
Kisspeptin	ID Confirmed		mg		HPLC-UV-MS	12/15/2025	374683-24-6

The data presented are from the analysis of the sample shown and meet Krause Analytical internal quality assurance criteria unless otherwise flagged. Methods shown reference current Krause Analytical SOPs  
 ND - Not detected LOQ - limit of quantification  
 Copyright © 2025 Krause Analytical LLC. All rights reserved.

Respectfully submitted,

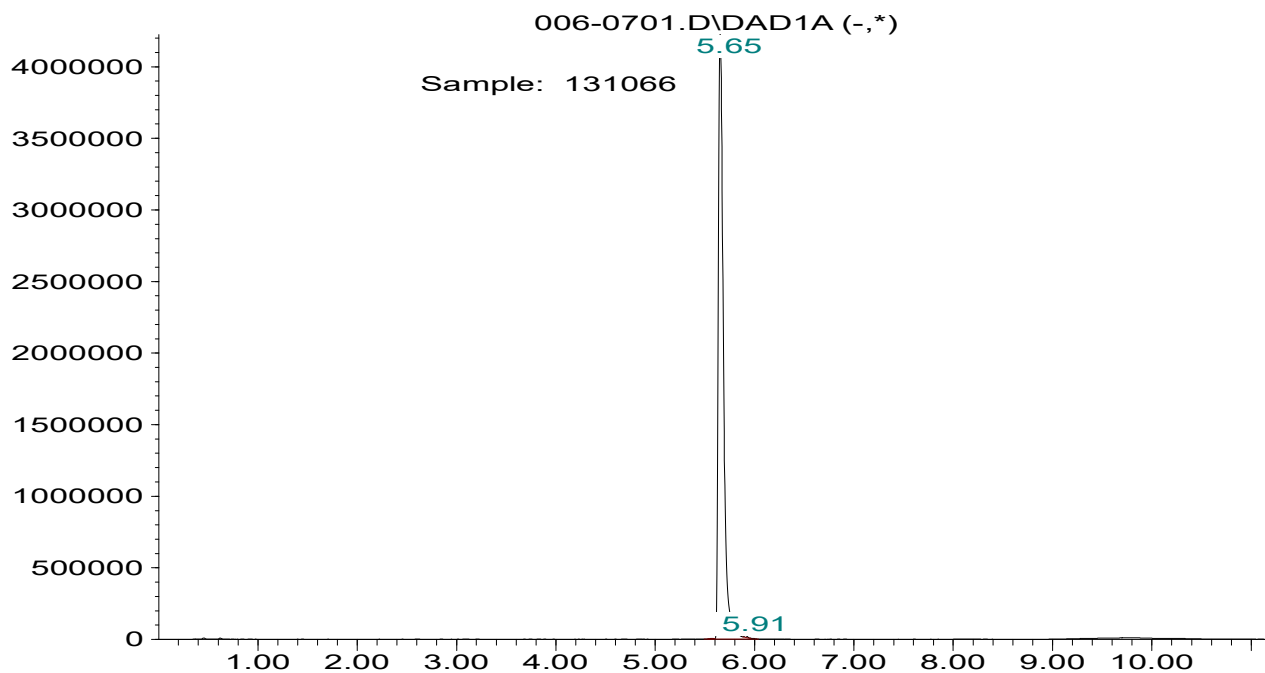
Mark C. Krause  
 Laboratory Director



krause analytical

### Chromatogram

Response\_



Time

### Mass spectrum/Reference Spectrum

