



Project 135558
Lab # 131055
Date Rec'd 12/9/2025
Report Issued 12/23/2025

Project
Sample MOTS-c 10 mg

Certificate of Analysis

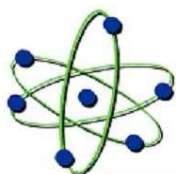


<u>Analyte</u>	<u>Result</u>	<u>LOQ</u>	<u>Units</u>	<u>% of Label</u>	<u>Method</u>	<u>Date</u>	<u>CAS</u>
Peptide Analysis							
Chromatographic purity	99.23	0.5	%		HPLC-UV/MS	12/13/2025	
MOTS-c	9.72	0.5	mg	97.2	HPLC-UV-MS	12/13/2025	1627580-64-6
MOTS-c	ID Confirmed				HPLC-UV-MS	12/13/2025	

The data presented are from the analysis of the sample shown and meet Krause Analytical internal quality assurance criteria unless otherwise flagged.
 Methods shown reference current Krause Analytical SOPs
 ND - Not detected LOQ - limit of quantification
 Copyright © 2025 Krause Analytical LLC. All rights reserved.

Respectfully submitted,

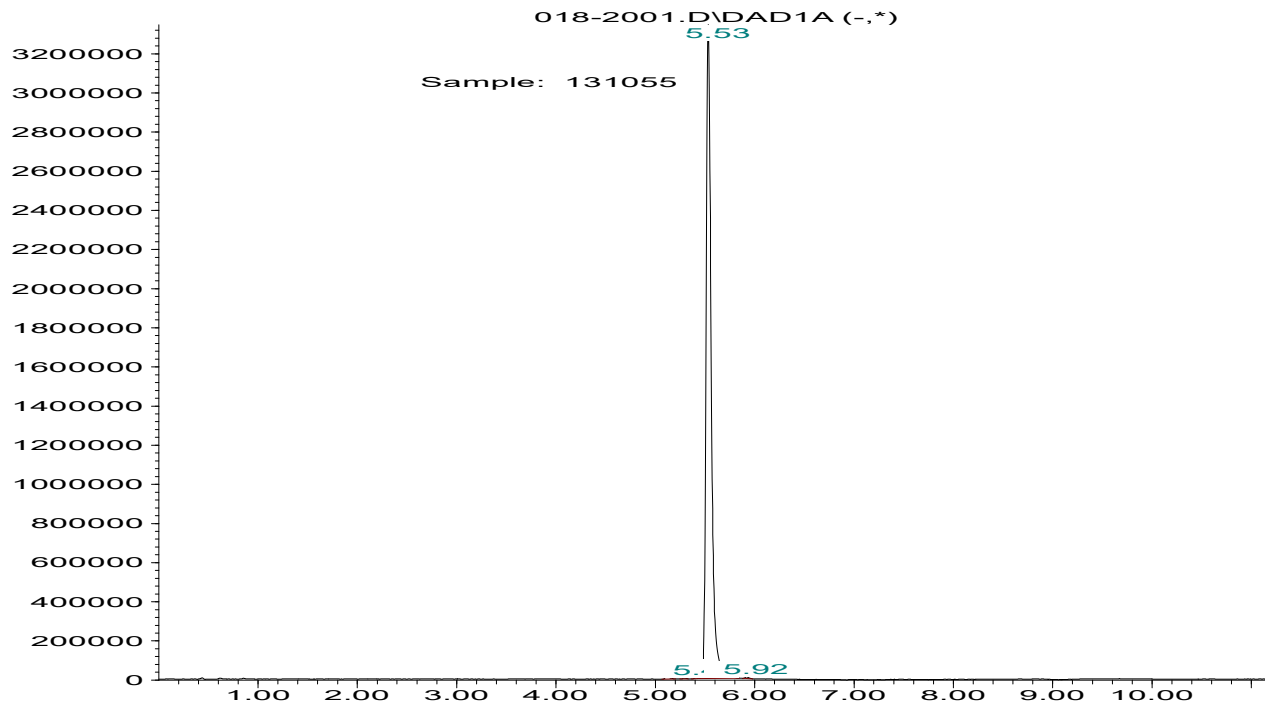
Mark C. Krause
 Laboratory Director



krause analytical

Chromatogram

Response_

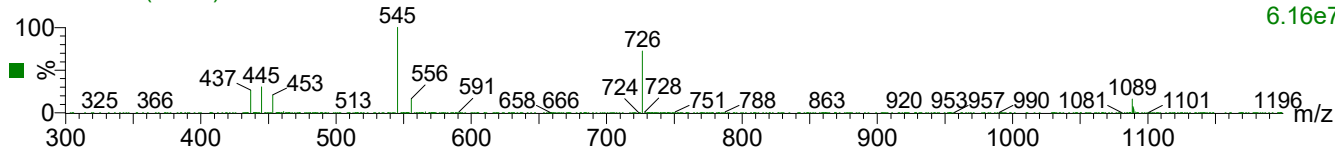


Time

Mass spectrum/Reference Spectrum

131055 128 (2.368)

Scan ES+
6.16e7



MOTS-c 124 (2.294)

Scan ES+
4.42e7

